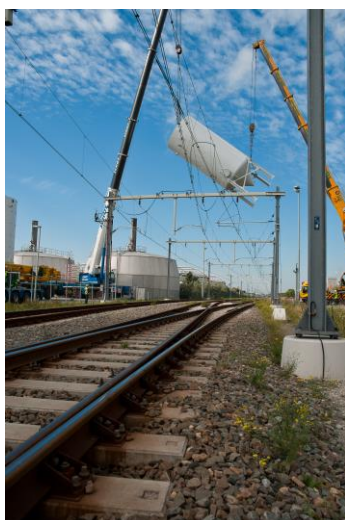


### Amsterdam – West WWTP Struvite Recovery



#### Scope of services

- Design and Construct (UAV-gc)
- Airprex® Struvite technology
- Production of MAP
- Industrial construction
- Process Control and Visualisation

#### Scope of delivery

- Airprex® technology, 500m<sup>3</sup> and 2 x 220m<sup>3</sup> reactors
- Coarse bubble aeration
- MgCl<sub>2</sub> storage (2 x 50m<sup>3</sup>) and dosing system
- MAP washing and storage
- Redundant ventilation (Ex)
- Pumps, piping and valves
- Complete electrical installations
- Autonomous process control (Package Unit) and visualisation

#### Features

- Three reactors and structural steel works were installed in one day during a complex logistic operation

#### Technical data

- Sludge treatment capacity 1.700.000 PE
- Flow digested bio-P sludge 70 – 120 m<sup>3</sup>/hr
- Removal orthophosphate 95%
- Improvement sludge dewatering 3 - 4% ds
- Reduction of PE app. 4g active PE/kg DS
- Production re-usable MAP product (Fosvaatje)

---

**Customer**  
Waternet Amsterdam,  
The Netherlands

---

**Completion**  
December 2013

---

**Contract value**  
EUR 1.8 million

---